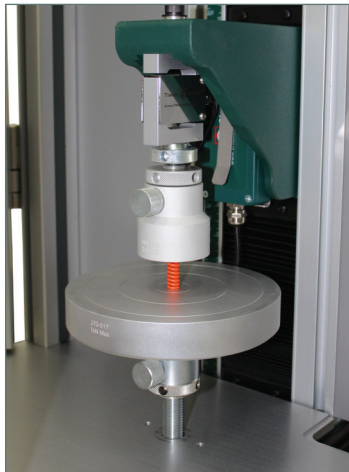




The first name in materials testing

# Model 1ST Extended Height Electromechanical Materials Testing Machine



The 1ST extended model is an Electromechanical Materials Testing Machine. It is a robust design for use in a range of materials testing.



# Model 1ST Extended height

The 1ST extended model is designed for tension, compression, flexure and shear strength testing on materials and assemblies. The frame has extended height by 254mm as compared to standard model. The robust design that incorporates quality materials and components ensures that our reputation for superior system performance, ease of use, and longevity is maintained. A variety of loadcells are available at differing capacities that give precise applied load measurements from the smallest test specimen to ones that go to full machine capacity. Test machines become complete, powerful test systems with the addition of grips to hold the specimen, strain measurement instrumentation and Tinius Olsen's Horizon Data Analysis software.

## FEATURES AND BENEFITS

- **Extended crosshead travel (1010mm)**
- **Bluetooth-enabled handheld interface allows maximum flexibility when paired to a testing machine.**
- **Suitable for tension, compression, flexure, shear and other tests to a maximum force of 1kN/200lbf.**
- **Different system interface options are available, from a familiar tethered handheld interface, a wireless Bluetooth interface panel running an Android application, or virtual machine controller application running on a PC. All interfaces work with Horizon Data Analysis software.**
- **Meets or exceeds the requirements of national and international standard for materials testing systems.**
- **Four full-length T-slots built into the machine column to allow accessories to be securely mounted to the test frame.**
- **Built-in pneumatic distribution ports provide local air supply to pneumatic grips.**

## INTERFACE OPTIONS

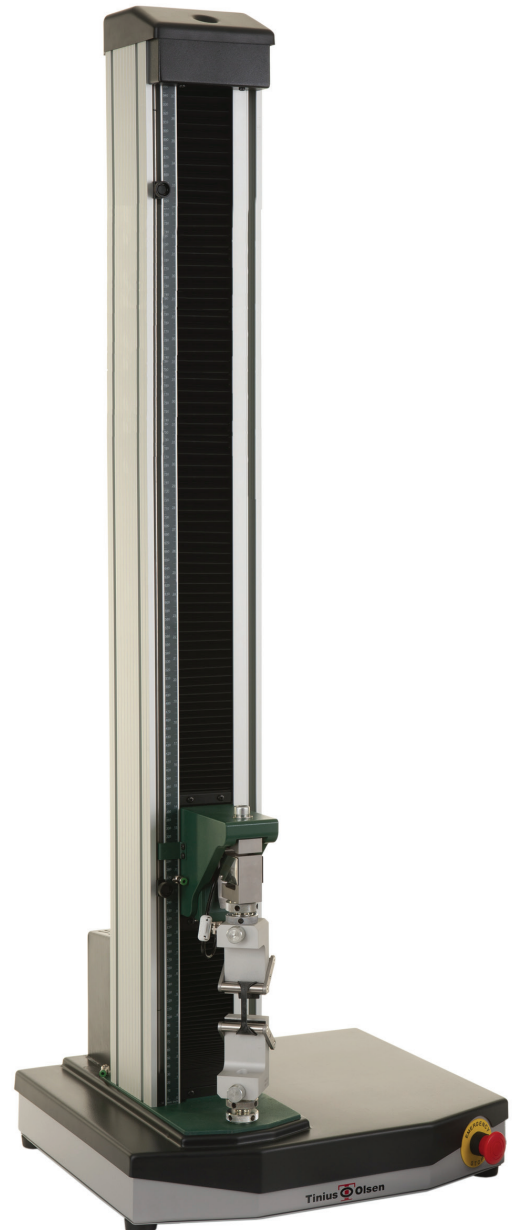
### HMC 3.0

Wireless handheld interface that is connected to the machine by a Bluetooth link. The interface features an Android-based operating platform and can be used to control the machine by itself or in conjunction with Tinius Olsen's Horizon software.



### Proterm

Familiar handheld interface that is tethered to the machine. With its larger, tactile, sealed keypad, this interface is ideal for operators who use gloves to load and unload specimens and prefer a push button keypad. It requires virtual machine control software running on a connected PC to operate the basic machine functions and report basic numerical test data.



## APPLICATIONS

Most common materials used in this particular model includes (but not limited to):

- Rubber and other high elongation materials.

Tinius  
Olsen



[www.tiniusolsen.com](http://www.tiniusolsen.com)

- Horsham, PA, USA
- Redhill, Surrey, UK
- Noida, UP, India
- Shanghai, PR China