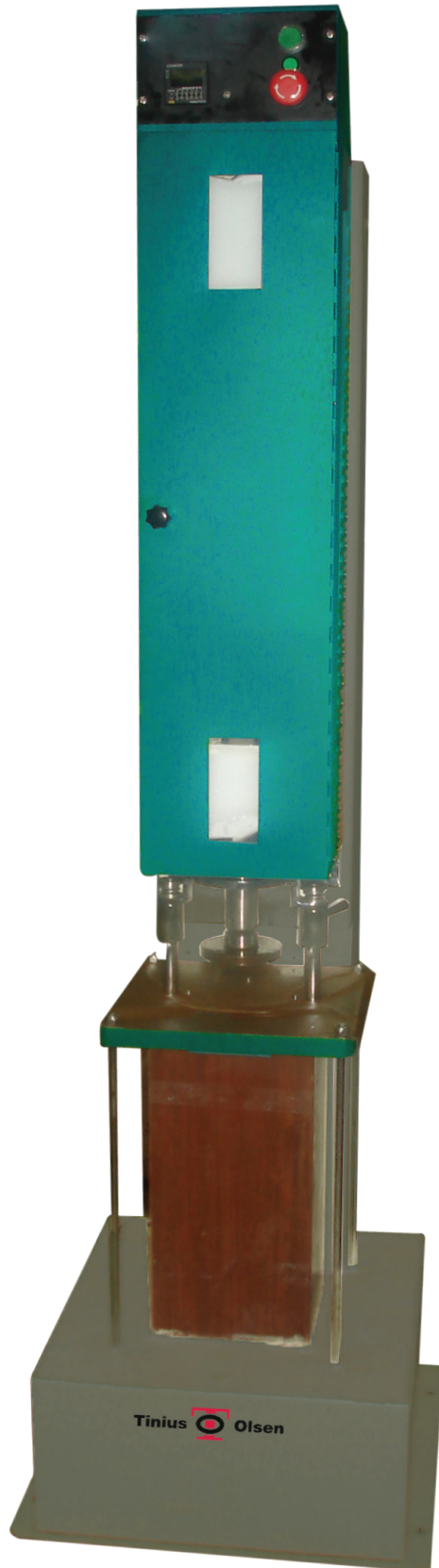


MODEL TO-553

Automatic Compactor for Bituminous Mixes – Light Compaction



The Automatic Compactor eliminates the laborious process of manual compaction and results in consistent laboratory specimens.

This equipment consists of a drive mechanism that lifts a 4.5kg weight and drops it through a height of 457mm. A removable rammer foot facilitates preheating. A compaction pedestal with specimen holder is fixed to the base. An automatic blow counter enables the number of blows to be preset before each test and automatically stops the machine on completion.

Applicable standards

- BS598-107, EN 12697-10, -30, AASHTO T245

Key features

- Rugged construction to withstand hard work.
- Fully automatic and easy to operate.
- Uniform compaction.
- Automatic blow counter.

SUPPLIED AS STANDARD

- **TO-55002** Compaction mold
- **TO-55003** Base plate
- **TO-55004** Extension collar

OPTIONAL ACCESSORIES

- **TO-55002** Compaction mold
- **TO-55003** Base plate
- **TO-55004** Extension collar

ORDERING INFORMATION

- **TO-553-1-01** Automatic Compactor for Bituminous Mixes of 100mm dia sample, 110V, 60Hz
- **TO-553-1-02** Automatic Compactor for Bituminous Mixes of 100mm dia sample, 220V, 60Hz
- **TO-553-1-03** Automatic Compactor for Bituminous Mixes of 100mm dia sample, 220V, 50Hz